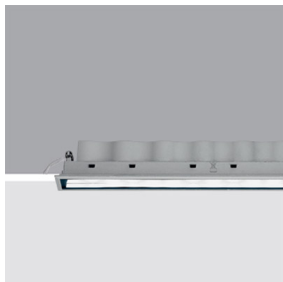


Last information update: April 2025

Product configuration: MQ73

MQ73: Recessed frame - LED - Neutral white - Incorporated DALI dimmable power supply - Wall washer optic

**Product code**

MQ73: Recessed frame - LED - Neutral white - Incorporated DALI dimmable power supply - Wall washer optic

Technical description

Miniaturized recessed rectangular luminaire with LEDs. Main body with die-cast aluminium radiant surface, version with perimeter surface frame. Asymmetrical optic system designed to achieve an effective wall washer distribution. Flux enhancer - superpure aluminium reflector - screen in PMMA with ribbed texture; a special film in acrylic material, combined with the screen, allow for a uniform and effective light emission on the wall. Black polycarbonate internal perimeter frame. Supplied with DALI dimmable control gear connected to the luminaire. Neutral white high colour rendering LED.

Installation

recessed with steel springs for false ceilings from 1 to 25 mm; can be installed on ceilings and walls (vertical + horizontal) - preparation slot 37 x 406. To light the wall correctly check the installation distances and centre-to-centre distances on the instructions sheet.

Colour

Black / Black (43) | Black / White (47) | Grey / Black (74)*

Weight (Kg)

0.87

* Colours on request

Mounting

wall recessed|ceiling recessed

Wiring

on power box: screw connections

Notes

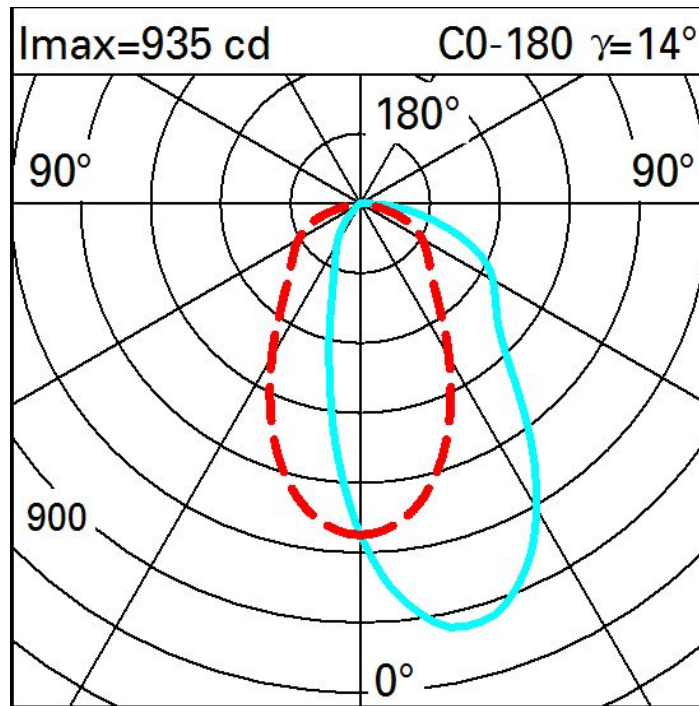
dimming function with pushbutton (TOUCH DIM/PUSH): for this option consult the instructions included in the package. Accessory anti-glare screen available code MPX9.

Complies with EN60598-1 and pertinent regulations

**Technical data**

lm system:	1189	Life Time LED 1:	50,000h - L90 - B10 (Ta 25°C)
W system:	35	Lamp code:	LED
lm source:	3050	Number of lamps for optical assembly:	1
W source:	31	ZVEI Code:	LED
Luminous efficiency (lm/W, real value):	34	Number of optical assemblies:	1
lm in emergency mode:	-	Power factor:	See installation instructions
Total light flux at or above an angle of 90° [Lm]:	0	Inrush current:	18 A / 250 µs
Light Output Ratio (L.O.R.) [%]:	39	Maximum number of luminaires of this type per miniature circuit breaker:	B10A: 21 luminaires B16A: 34 luminaires C10A: 35 luminaires C16A: 57 luminaires
CRI (minimum):	95	Minimum dimming %:	1
CRI (typical):	97	Overvoltage protection:	2kV Common mode & 1kV Differential mode
Colour temperature [K]:	4000	Control:	DALI-2
MacAdam Step:	3		

Polar



Illuminances

Lux													Wall distance = 1m	
3														
	3	7	17	46	129	218	129	46	17	7	3			
2	6	12	24	53	113	157	113	53	24	12	6			
	7	12	23	48	91	118	91	48	23	12	7			
1	6	11	20	39	64	78	64	39	20	11	6			
	6	10	18	29	42	48	42	29	18	10	6			
0														
	m	-2	-1		0		1	2	3					