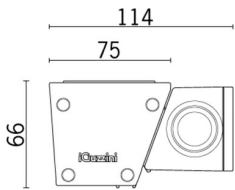
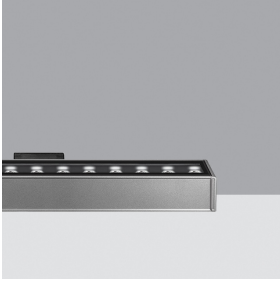


Last information update: September 2024

Product configuration: BI58

BI58: Compact - Wall-/Ceiling-mounted - Warm White LED - DALI - L=528mm - Wall Grazing Optic

**Product code**BI58: Compact - Wall-/Ceiling-mounted - Warm White LED - DALI - L=528mm - Wall Grazing Optic **Attention! Code no longer in production****Technical description**

Direct light luminaire, designed to use monochrome LED lamps, Dali dimmable. Ceiling- and wall-mounted. Consists of a body and supports for installation, to be ordered separately. Extruded aluminium body, with die-cast aluminium end caps complete with silicone seals. Coated with liquid acrylic paint with a high level of weather and UV ray resistance. Lateral control gear box made of PPS (polyphenylene sulfide). The top of the optical assembly is closed by a 3 mm thick transparent glass screen, fixed with silicone. Complete with multi-LED plate in Warm White. Fitted with optics with plastic (methacrylate) lens for Wall Grazing lighting. The lateral box is supplied with a double connector, male/female, with 5-pin quick coupling for pass-through wiring and a closing cap on one side. Set up for pass-through earth wiring. All external screws used are made of A2 stainless steel. The luminaire technical characteristics conform to EN 60598-1 standards and particular requirements.

Installation

Accessories available for installation: $\pm 90^\circ$ adjustable arms L=138mm (code 5576), arms extendable from 309 to 389mm and adjustable $\pm 90^\circ$ (code 5577), bracket for wall-mounting L=310mm (code BZI0), brackets for mounting on balustrades L297mm (code 5578), bracket for surface- or ceiling-mounting L=309mm (code 5570).

Colour

Grey (15)

Weight (Kg)

1.65

Mounting

wall surface|ceiling surface

Wiring

The product is supplied with electronic control gear, Dali dimmable 220÷240Vac, 50/60Hz contained in the luminaire. Available for electrical connection and Dali control: IP66 5-pin female connector (BZI5), IP66 5-pin male connector + closing cap (BZI6), IP66 5-pin male connector + female connector (BZI7), multi-pole cable units with 5-pin male + female connectors (BZJ3-BZJ4-BZJ5)

Notes

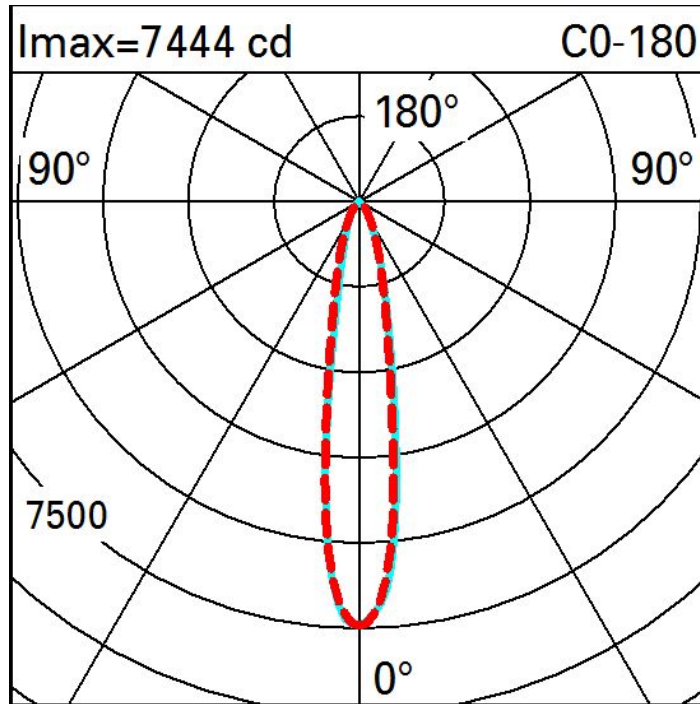
Product complete with LED lamp. The electronic board takes one Dali address, absorbs one Dali load.

Complies with EN60598-1 and pertinent regulations

**Technical data**

Im system:	1221	MacAdam Step:	3
W system:	16.2	Life Time LED 1:	100,000h - L80 - B10 (Ta 25°C)
Im source:	1850	Life Time LED 2:	100,000h - L80 - B10 (Ta 40°C)
W source:	12	Voltage [Vin]:	230
Luminous efficiency (Im/W, real value):	75.4	Lamp code:	LED
Im in emergency mode:	-	Number of lamps for optical assembly:	1
Total light flux at or above an angle of 90° [Lm]:	0	ZVEI Code:	LED
Light Output Ratio (L.O.R.) [%]:	66	Number of optical assemblies:	1
CRI (minimum):	80	Intervallo temperatura ambiente:	from -30°C to 50°C.
Colour temperature [K]:	3000	Control:	DALI

Polar



Illuminances

Lux		Wall distance = 1m											
3													
		0.2	0.5	1	4	5	4	1	0.5	0.2			
2		0.3	0.7	1	4	9	14	9	4	1	0.7	0.3	
		0.5	1.0	2	11	35	48	35	11	2	1.0	0.5	
1		0.6	1	5	20	35	46	35	20	5	1	0.6	
		0.9	3	10	18	31	44	31	18	10	3	0.9	
0													
	m	-2	-1	0	1	2	3						