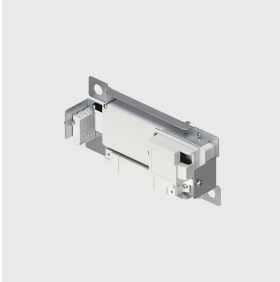


Last information update: April 2025

**Accessory code**

SP00: Ceiling-mounted bracket - for CASAMBI control and bases with lux/motion sensor - complete with 35 W - 48 V power supply

---

**Technical description**

Bracket for ceiling-mounted installation, complete with Casambi interface and dimmable 35 W - 48 V power supply, to be connected to the wired cover bases with an end element fitted with a lux/motion sensor.

The components used allow the Libera luminaires to be controlled with the Casambi system app and components, enabling on-off, dimming and scene recall functions and allowing multiple luminaires to operate in a Casambi mesh network. 2.4 GHz bluetooth frequency. This also allows the daylight and motion control functions to be managed via the Casambi system. The app is available on the Apple Store and Google Play Store. Integrated Beacon that can be activated via an app (iBeacon) that enables smart functions for third party applications and the Jiminy Push Notification app. Power supply features include overvoltage protection, short circuit protection, overcurrent and overtemperature protection.

---

**Installation**

Ceiling-mounted. Fitted with slots for fastening with screws.

---

**Colour**

Indeterminate (00)

---

**Notes**

To be completed with a wired cover base with an end cap fitted with a lux/motion sensor.

Consult the instruction sheet for the number of luminaires that can be connected.

Max distance between Casambi Bracket and other Casambi Bracket 30 m.

Max distance between Smartphone and Casambi Bracket 30 m.

The maximum distance is affected by physical obstacles, like walls, metal panels and the layout of the system.

Complies with EN60598-1 and pertinent regulations

**IP20**

---

**Technical data**Control: **Casambi**

---