

## Comfort

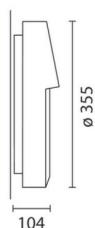
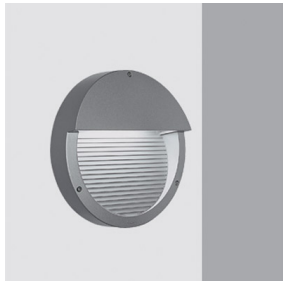
Design Mario  
Cucinella

iGuzzini

Last information update: February 2023

### Product configuration: B577+L078

B577: Wall Comfort round 26 W TC-DEL



### Product code

B577: Wall Comfort round 26 W TC-DEL **Attention! Code no longer in production**

### Technical description

Wall and ceiling luminaire for public residential areas using 26W TC-DEL compact fluorescent lamps. The body and the frame are made of die-cast aluminium. Complete with glass protection screen. Translucent polycarbonate component-holding box with polycarbonate cover. Stainless steel screws with hexagonal head. EPDM perimetral seal for through wiring by means of PG11 cable-clamp.

### Installation

Fixed to the wall or the ceiling with no. 3 4-mm fischer screws placed at 120°.

### Colour

Grey (15)

### Mounting

wall surface

### Wiring

Wiring contained in the body of the fitting: 230V 50Hz low loss electronic ballast, 3-pole fast coupling terminal board, possibility of separate starting for each lamp, silicone cables, radio interference filter.

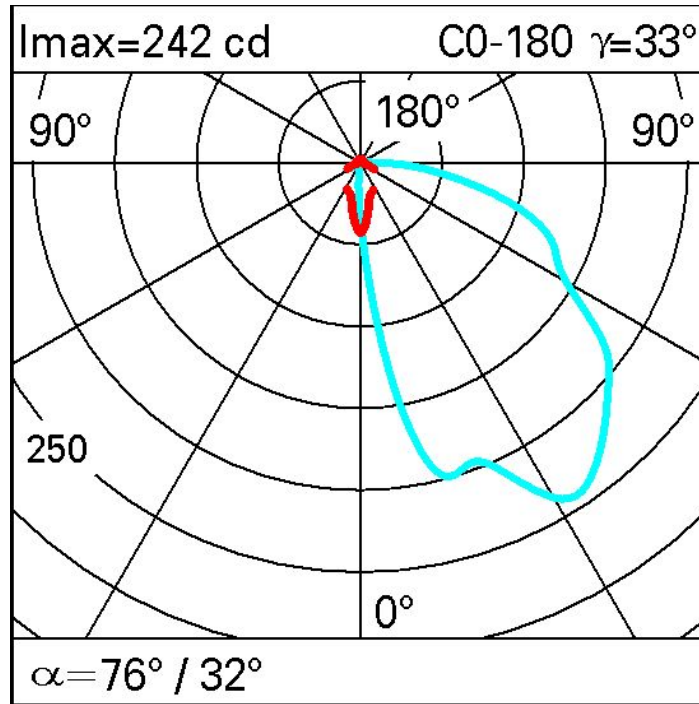
Complies with EN60598-1 and pertinent regulations



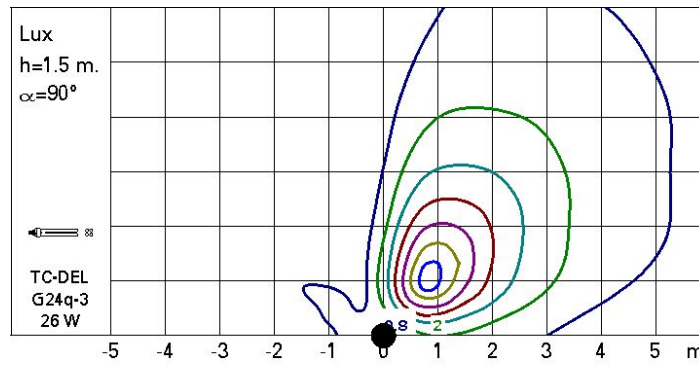
### Technical data

|  |       |                                       |                      |
|--|-------|---------------------------------------|----------------------|
| Im system:   | 322.2 | Colour temperature [K]:               | 4000                 |
| W system:  | 28    | Ballast losses [W]:                   | 2                    |
| Im source:   | 1800  | Voltage [Vin]:                        | 230                  |
| W source:  | 26    | Lamp code:                            | L078                 |
| Luminous efficiency (Im/W, real value):            | 11.5  | Socket:                               | G24q-3               |
| Im in emergency mode:                              | -     | Number of lamps for optical assembly: | 1                    |
| Total light flux at or above an angle of 90° [Lm]: | 18.6  | ZVEI Code:                            | TC-DEL               |
| Light Output Ratio (L.O.R.) [%]:                   | 18    | Number of optical assemblies:         | 1                    |
| CRI:   | 85    | Intervalllo temperatura ambiente:     | from -20°C to +35°C. |

Polar



Isolux



# UGR diagram

| Corrected UGR values (at 1800 lm bare lamp luminous flux)    |      |                     |      |      |      |      |                   |      |      |      |      |
|--|------|---------------------|------|------|------|------|-------------------|------|------|------|------|
| Reflect.:<br>ceiling<br>walls<br>work pl.<br>Room dim<br>x y |      | 0.70                | 0.70 | 0.50 | 0.50 | 0.30 | 0.70              | 0.70 | 0.50 | 0.50 | 0.30 |
|  |      | 0.50                | 0.30 | 0.50 | 0.30 | 0.30 | 0.50              | 0.30 | 0.50 | 0.30 | 0.30 |
|  |      | 0.20                | 0.20 | 0.20 | 0.20 | 0.20 | 0.20              | 0.20 | 0.20 | 0.20 | 0.20 |
|  |      | viewed<br>crosswise |      |      |      |      | viewed<br>endwise |      |      |      |      |
| 2H   | 2H   | 0.0                 | 0.0  | 0.0  | 0.0  | 0.0  | 0.0               | 0.0  | 0.0  | 0.0  | 0.0  |
|  | 3H   | 26.5                | 27.5 | 27.0 | 27.9 | 28.3 | 17.8              | 18.8 | 18.3 | 19.2 | 19.6 |
|  | 4H   | 26.9                | 27.8 | 27.3 | 28.2 | 28.7 | 17.7              | 18.6 | 18.2 | 19.1 | 19.5 |
|  | 6H   | 27.8                | 28.7 | 28.3 | 29.1 | 29.6 | 18.2              | 19.0 | 18.6 | 19.5 | 19.9 |
|  | 8H   | 28.2                | 29.0 | 28.6 | 29.4 | 29.9 | 18.3              | 19.2 | 18.8 | 19.6 | 20.1 |
|  | 12H  | 28.5                | 29.3 | 29.0 | 29.7 | 30.2 | 18.4              | 19.2 | 18.9 | 19.6 | 20.1 |
| 4H   | 2H   | 23.9                | 24.8 | 24.4 | 25.2 | 25.7 | 16.2              | 17.1 | 16.7 | 17.5 | 18.0 |
|  | 3H   | 26.4                | 27.2 | 26.9 | 27.6 | 28.1 | 18.1              | 18.9 | 18.6 | 19.4 | 19.9 |
|  | 4H   | 27.6                | 28.4 | 28.2 | 28.8 | 29.4 | 19.0              | 19.7 | 19.5 | 20.2 | 20.7 |
|  | 6H   | 28.8                | 29.4 | 29.3 | 29.9 | 30.5 | 19.8              | 20.5 | 20.4 | 21.0 | 21.5 |
|  | 8H   | 29.2                | 29.8 | 29.8 | 30.3 | 30.9 | 20.2              | 20.8 | 20.7 | 21.3 | 21.9 |
|  | 12H  | 29.6                | 30.2 | 30.2 | 30.7 | 31.3 | 20.4              | 21.0 | 21.0 | 21.5 | 22.1 |
| 8H   | 4H   | 27.6                | 28.3 | 28.3 | 28.9 | 29.4 | 19.1              | 19.7 | 19.7 | 20.2 | 20.8 |
|  | 6H   | 29.0                | 29.5 | 29.6 | 30.1 | 30.7 | 20.2              | 20.6 | 20.7 | 21.2 | 21.8 |
|  | 8H   | 29.6                | 30.0 | 30.2 | 30.6 | 31.2 | 20.7              | 21.1 | 21.3 | 21.7 | 22.3 |
|  | 12H  | 30.2                | 30.6 | 30.8 | 31.2 | 31.8 | 21.2              | 21.5 | 21.8 | 22.1 | 22.8 |
| 12H  | 4H   | 27.7                | 28.3 | 28.3 | 28.8 | 29.4 | 19.1              | 19.7 | 19.7 | 20.2 | 20.8 |
|  | 6H   | 29.0                | 29.5 | 29.6 | 30.0 | 30.7 | 20.2              | 20.6 | 20.8 | 21.2 | 21.8 |
|  | 8H   | 29.7                | 30.0 | 30.3 | 30.6 | 31.3 | 20.8              | 21.1 | 21.4 | 21.7 | 22.4 |
| Variations with the observer position at spacing:            |      |                     |      |      |      |      |                   |      |      |      |      |
| S =  | 1.0H | 0.1 / -0.1          |      |      |      |      | 0.2 / -0.3        |      |      |      |      |
|  | 1.5H | 0.2 / -0.2          |      |      |      |      | 0.6 / -0.8        |      |      |      |      |
|  | 2.0H | 0.3 / -0.3          |      |      |      |      | 1.2 / -1.6        |      |      |      |      |