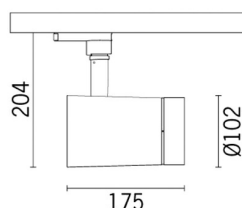


**Product configuration: QG43**

QG43: small body - Neutral White - dimmable electronic ballast - medium optic



QG43: small body - Neutral White - dimmable electronic ballast - medium optic

Adjustable spotlight with adapter for installation on mains electrified track for high output LED lamp with monochrome emission in a Neutral White (4000K) tone. Dimmable electronic ballast integrated in the product. Luminaire made of die-cast aluminium and thermoplastic material, allows 360° rotation about the vertical axis and 90° tilting relative to the horizontal plane. The luminaire has mechanical aiming locks for both movements, operated using the same tool on two screws, one at the side of the rod and one on the adapter for the track. Passive heat dissipation. Spotlight can hold up to two flat accessories at the same time. Another external component can also be applied, selected from directional flaps and an anti-glare screen. All external accessories rotate 360° about the spotlight longitudinal axis.

On an electrified track with a special base

**Colour**  
White (01) | Black (04)

**Weight (Kg)**  
1.28

## three circuit track

The dimmable electronic components are housed in the luminaire

Complies with EN60598-1 and pertinent regulations



Im system:	1981	Life Time LED 1:	> 50,000h - L90 - B10 (Ta 25°C)
W system:	29.6	Lamp code:	LED
Im source:	2700	Number of lamps for optical assembly:	1
W source:	26	ZVEI Code:	LED
Luminous efficiency (lm/W, real value):	66.9	Number of optical assemblies:	1
Im in emergency mode:	-	Power factor:	See installation instructions
Total light flux at or above an angle of 90° [Lm]:	0	Inrush current:	5 A / 50 µs
Light Output Ratio (L.O.R.) [%]:	73	Maximum number of luminaires of this type per miniature circuit breaker:	B10A: 31 luminaires B16A: 50 luminaires C10A: 52 luminaires C16A: 85 luminaires
Beam angle [°]:	20°	Minimum dimming %:	1
CRI (minimum):	97	Overvoltage protection:	4kV Common mode & 2kV Differential mode
Colour temperature [K]:	4000	Control:	Completo di dimmer
MacAdam Step:	2		

	<table border="1"> <tr> <th colspan="2">Lux</th> </tr> <tr> <th>h</th> <th>d</th> </tr> <tr> <td>2</td> <td>0.7</td> </tr> <tr> <td>4</td> <td>1.4</td> </tr> <tr> <td>6</td> <td>2.1</td> </tr> <tr> <td>8</td> <td>2.8</td> </tr> </table>	Lux		h	d	2	0.7	4	1.4	6	2.1	8	2.8
Lux													
h	d												
2	0.7												
4	1.4												
6	2.1												
8	2.8												
	<table border="1"> <tr> <th>Em</th> <th>E<sub>max</sub></th> </tr> <tr> <td>2178</td> <td>2859</td> </tr> <tr> <td>544</td> <td>715</td> </tr> <tr> <td>242</td> <td>318</td> </tr> <tr> <td>136</td> <td>179</td> </tr> </table>	Em	E <sub>max</sub>	2178	2859	544	715	242	318	136	179		
Em	E <sub>max</sub>												
2178	2859												
544	715												
242	318												
136	179												