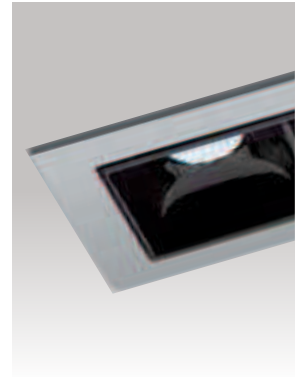




Project name: _____

Type: _____



Low luminance architectural downlight.

Luminaire characteristics:

Power input: 12W

Lumens: 705lm (delivered)

Luminaire efficacy: 47lm/W

Source: White LED, (LM-80 tested)

3000K : 97CRI (min>90CRI).

Lumen maintenance: >80% of initial lumens at 50 000 hours (L80)
LM-79 tested.

Optics: low luminance: 48 degree optics, with Optibeam technology.

Mounting: New construction housing suitable for insulated ceilings.

Material:

Body: Die-cast aluminum body and heat sink

Reflector: thermoplastic

Baffles: thermoplastic

Housing: Galvanized steel housing

Electrical: Integral high efficiency electronic driver, rated at 50 000 hours. 120V-277V.

Finish: White (RAL9010).

Weight: 0.79lbs (0.36kg).

Warranty: 5 year limited warranty.

Certification: cULus listed for damp location.

Energy star certified product. To confirm which versions are certified, please consult the products list:

www.energystar.gov/productfinder

Ratings: IP20



LASER BLADE 5

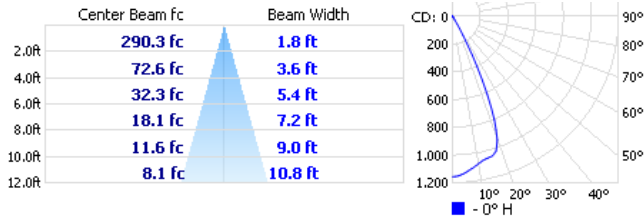
DOWNLIGHT

Project name: _____

Type: _____

TECHNICAL DATA

LOAD	CCT	CRI	OPTIC	DELIVERED LUMENS	LUMINAIRE EFFICACY	CENTER BEAM CANDLE POWER	MODEL
(W)	(K)			(lm)	(lm / w)	(cd)	
12W	3000K	97	FLOOD - 48°	705	47	1245	I.MQ81



3000K - 97 CRI >90CRI - 48° - Flood

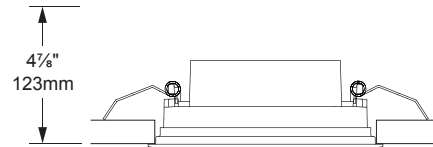
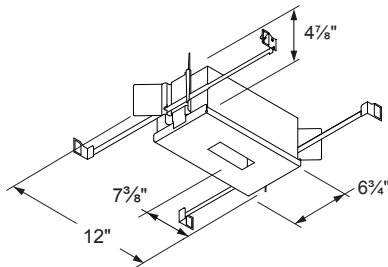
HOUSING

BI5125 - New construction housing also suitable for insulated ceiling

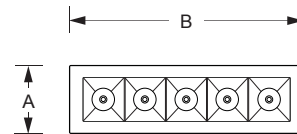
Dimensions: 6³/₄" x 12", h: 4⁷/₈" (171mm x 303mm, h: 123mm)

Hanger bars: 9" to 15¹/₄" (229mm x 387mm)

Clearance: 4⁷/₈" (123mm)



SECTION VIEW



BOTTOM VIEW

INSTALLATION INFO

Ceiling thickness: Min: 1/8" (3mm), Max 1 1/8" (29mm)

Cut-out dimensions: 1 1/2 x 5 1/2" (37mm x 141mm)

		A	B
Trim	in	1 1/4	5 1/8
	mm	44	148

ORDERING INFO

MODEL	VOLTAGE	FINISH	MOUNTING
MODEL	VOLTAGE	FINISH	MOUNTING
<input type="radio"/> I.MQ81 - 3000K, Flood, 97CRI (min>90CRI)	<input type="radio"/> UNV - 120-277V	<input type="radio"/> 01 - White	<input type="radio"/> BI5125 - New construction housing