

Project name: _____

Type: _____



General information

Luminaire characteristics:

Power input: 31.5 to 65W
Lumens: 2340 to 6210lm (delivered)
Luminaire efficacy: 71 to 104lm/W

Source: White LED (LM-80 Tested)

3000K : 80CRI

4000K : 70CRI

Lumen maintenance: >90% of initial lumens at 90 000 hours (L90). LM-79 tested.

Optics: High efficiency optical system made of a silver coated aluminum delivering 98% of reflectivity. U.F.O. is available with 5 different optics: IESNA optics Type II, III, IV, and Type II, III with comfort optic for reduced glare.

Material:

Body: Aluminum die-cast alloy EN1706AC 46100L

Diffuser: Impact resistant (IK08) 5 mm thick colorless sodium-calcium glass, sealed at the factory.

Hardware: Stainless steel 304 screws and HCR Silicone 60 Shore gaskets.

Electrical: Most models available with a multi channels programmable smart driver 120-277V 50/60Hz.

Operating temperature: -40°C to 40°C.

Dimming: Please contact factory for dimming options.

Mounting: Universal mounting arms for Ø4" (102mm) pole.

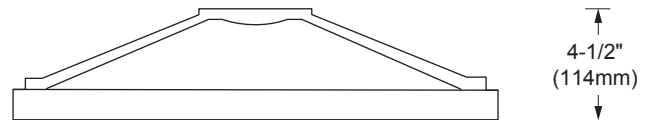
Finish: Gray (RAL9007) painted finish with a high level of weather and UV resistance. The semi-gloss finish coating is electrostatically applied, durable acrylic enamel baked at high temperatures for superior color retentive finish.

Weight: 22lbs (10kg).

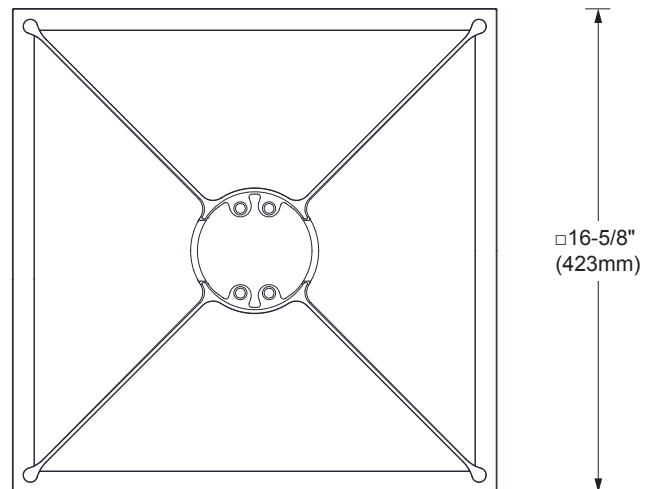
Warranty: 5 year limited warranty.

Certification: cULus listed for Wet location.

Ratings: IP67, IK08



SIDE VIEW

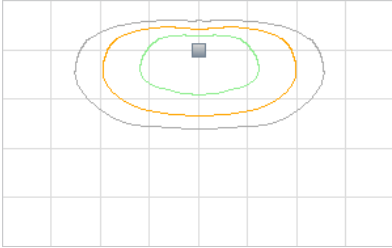


TOP VIEW

Project name: _____

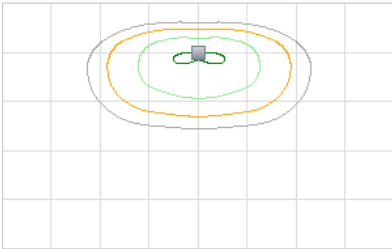
Type: _____

MODEL OPTIONS



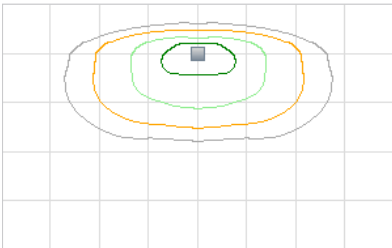
IES II

K	SIZE	MODEL	BO (350mA)				HO (450mA)				VHO (525mA)			
			L/W	LUMENS	WATT	B.U.G.	L/W	LUMENS	WATT	B.U.G.	L/W	LUMENS	WATT	B.U.G.
3000	S	I.BL04	78	2460	31.5	B1-U0-G1	75	2850	38	B1-U0-G1	72	3200	44	B1-U0-G1
		I.BL06	79	3150	40	B1-U0-G1	76	3560	46.5	B1-U0-G1	73	4000	54.5	B1-U0-G1
4000	S	I.BL05	101	3180	31.5	B1-U0-G1	97	3680	38	B1-U0-G1	94	4140	44	B1-U0-G1
		I.BL07	102	4070	40	B1-U0-G1	99	4600	46.5	B1-U0-G1	95	5170	54.5	B1-U0-G1



IES II COMFORT

K	SIZE	MODEL	BO (350mA)				HO (450mA)				VHO (525mA)			
			L/W	LUMENS	WATT	B.U.G.	L/W	LUMENS	WATT	B.U.G.	L/W	LUMENS	WATT	B.U.G.
3000	S	I.BL12	75	2340	31.5	B1-U0-G1	71	2700	38	B1-U0-G1	69	3040	44	B1-U0-G1
		I.BL14	76	3510	46	B1-U0-G1	73	4050	55.5	B1-U0-G1	70	4560	64.5	B1-U0-G1
4000	S	I.BL13	97	3030	31.5	B1-U0-G1	92	3490	38	B1-U0-G1	89	3930	44	B1-U0-G1
		I.BL15	99	4540	46	B1-U0-G1	94	5240	55.5	B1-U0-G1	91	5900	64.5	B2-U0-G1



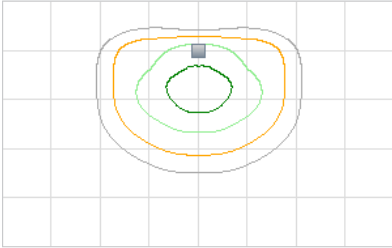
IES III

K	SIZE	MODEL	BO (350mA)				HO (450mA)				VHO (525mA)			
			L/W	LUMENS	WATT	B.U.G.	L/W	LUMENS	WATT	B.U.G.	L/W	LUMENS	WATT	B.U.G.
3000	S	I.BL08	79	3180	40	B1-U0-G1	76	3620	47.5	B1-U0-G1	73	4000	54.5	B1-U0-G1
4000	S	I.BL09	103	4120	40	B1-U0-G1	98	4690	47.5	B1-U0-G1	95	5170	54.5	B1-U0-G1

Project name: _____

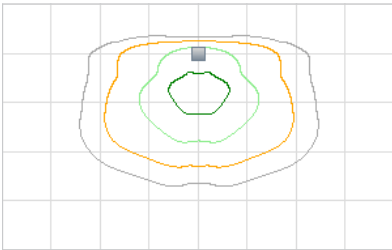
Type: _____

MODEL OPTIONS



IES III COMFORT

K	SIZE	MODEL	BO (350mA)				HO (450mA)				VHO (525mA)			
			L/W	LUMENS	WATT	B.U.G.	L/W	LUMENS	WATT	B.U.G.	L/W	LUMENS	WATT	B.U.G.
3000	S	I.BL16	72	3320	46	B1-U0-G1	69	3840	55.5	B1-U0-G1	66	4320	65	B1-U0-G1
4000	S	I.BL17	93	4300	46	B1-U0-G1	89	4960	55.5	B1-U0-G1	86	5590	65	B1-U0-G1



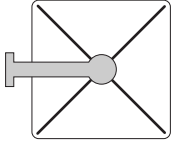
IES IV

K	SIZE	MODEL	BO (350mA)				HO (450mA)				VHO (525mA)			
			L/W	LUMENS	WATT	B.U.G.	L/W	LUMENS	WATT	B.U.G.	L/W	LUMENS	WATT	B.U.G.
3000	S	I.BL10	80	3690	46	B0-U0-G2	77	4270	55.5	B0-U0-G2	74	4800	65	B1-U0-G2
4000	S	I.BL11	104	4780	46	B1-U0-G2	100	5520	55.5	B1-U0-G2	96	6210	65	B1-U0-G2

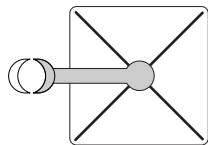
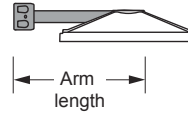
Project name: _____

Type: _____

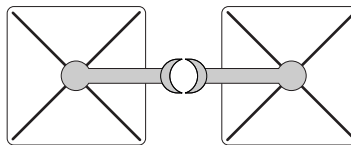
MOUNTING OPTIONS



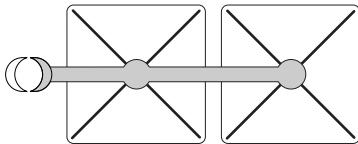
W - WALL MOUNT



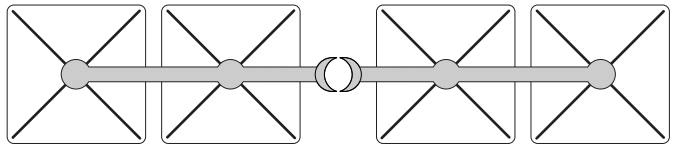
A1 - HORIZONTAL ONE
Arm length: 16 $\frac{1}{8}$ " (411mm)



A2 - DOUBLE HORIZONTAL ONE
Arm length: 2 x 16 $\frac{1}{8}$ " (411mm)



B1 - HORIZONTAL TWO
Arm length: 30 $\frac{1}{8}$ " (840mm)



B2 - DOUBLE HORIZONTAL TWO
Arm length: 2 x 30 $\frac{1}{8}$ " (840mm)

Project name: _____

Type: _____

ORDERING INFO

MODEL	OUTPUT	VOLTAGE	MOUNTING	FINISH
<ul style="list-style-type: none"> <input type="radio"/> I.BL04 - 3000K, Type II <input type="radio"/> I.BL05 - 4000K, Type II <input type="radio"/> I.BL06 - 3000K, Type II <input type="radio"/> I.BL07 - 4000K, Type II <input type="radio"/> I.BL08 - 3000K, Type III <input type="radio"/> I.BL09 - 4000K, Type III <input type="radio"/> I.BL10 - 3000K, Type IV <input type="radio"/> I.BL11 - 4000K, Type IV <input type="radio"/> I.BL12 - 3000K, Type II C <input type="radio"/> I.BL13 - 4000K, Type II C <input type="radio"/> I.BL14 - 3000K, Type II C <input type="radio"/> I.BL15 - 4000K, Type II C <input type="radio"/> I.BL16 - 3000K, Type III C <input type="radio"/> I.BL17 - 4000K, Type III C 	<ul style="list-style-type: none"> <input type="radio"/> BO <input type="radio"/> HO <input type="radio"/> VHO 	<ul style="list-style-type: none"> <input checked="" type="radio"/> UNV- 120-277V 	<ul style="list-style-type: none"> <input type="radio"/> A1 - Horizontal one <input type="radio"/> A2 - Double horizontal one <input type="radio"/> B1 - Horizontal two <input type="radio"/> B2 - Double horizontal two <input type="radio"/> W - Wall mount 	<ul style="list-style-type: none"> <input checked="" type="radio"/> 15 - GRAY

Project name: _____

Type: _____

POLE Ø4" (102mm)

- SUPPLIED BY IGUZZINI NORTH AMERICA
CONTACT FACTORY FOR POLE SPECIFICATION
- SUPPLIED BY OTHER
CONTACT FACTORY FOR POLE DETAILS

HEIGHT: _____ FT

MODEL: _____

FINISH: 15 - GRAY RAL9007
 CUSTOM RAL _____

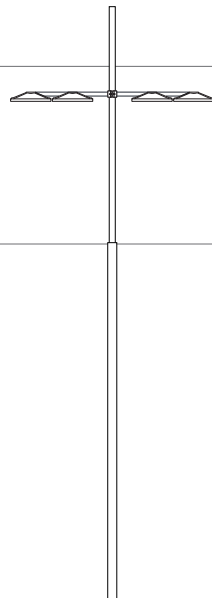
EPA & WEIGHT

MOUNT	SMALL	
	WEIGHT lbs	EPA ft ²
A1	35.1	0.5
A2	60.4	0.8
B1	61.1	0.9
B2	112.4	1.6

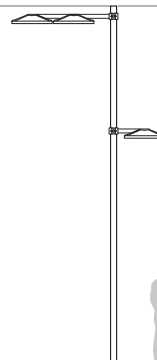
40ft.

30ft.

20ft.



STEPPED



STRAIGHT