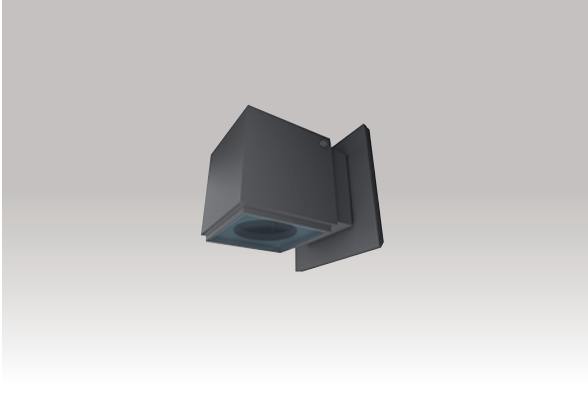


Project name: _____

Type: _____



A discreet and versatile line of products created to meet the multiple requirements of light in urban architecture and residential areas. A compact and essential design, specifically designed to facilitate installation and maintenance operations and guarantee minimal visual impact.

Luminaire characteristics:

Power input: 6.5W

Lumens: 200 to 245lm

Luminaire efficacy: 30 to 37lm/W

Source: White LED (LM-80 tested)

3000K: 80CRI,

4000K: 80CRI.

Lumen maintenance: LM-79 tested

80% of initial lumens at 100 000 hours - L80 (Ta25C)

80% of initial lumens at 66 000 hours - L80 (Ta40C)

Optics: Available in flood or wide flood beam.

Mounting: Wall mounted, installs on a standard 4" Junction box.

Body:

body: Die-cast aluminum

Reflector: Anodized aluminum

Diffuser: Tempered glass.

Lens: Thermoplastic and polycarbonate

Hardware: Stainless steel screws

Electrical: High efficiency electronic driver, rated at 50 000 Hours, 120V - 277V.

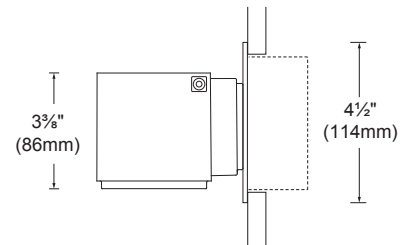
Finish: Gray (RAL9007) or White (RAL9016) painted finish with a high level of weather and UV resistance. The semi-gloss finish coating is electrostatically applied, durable acrylic enamel baked at high temperatures for superior color retentive finish.

Weight: 2.03lbs (0.92kg).

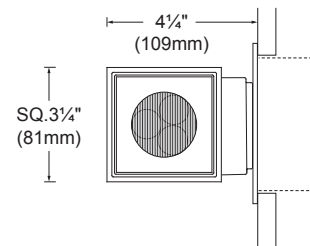
Warranty: 5 year limited warranty.

Certification: cULus listed for wet location.

Ratings: IP66, IK07



SIDE VIEW



BOTTOM VIEW

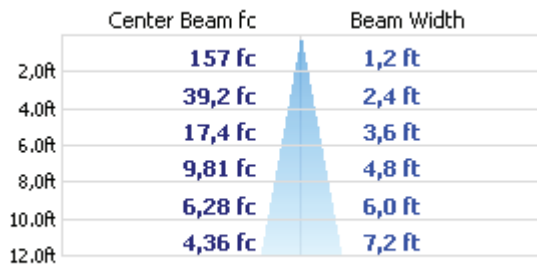
Project name: _____

Type: _____

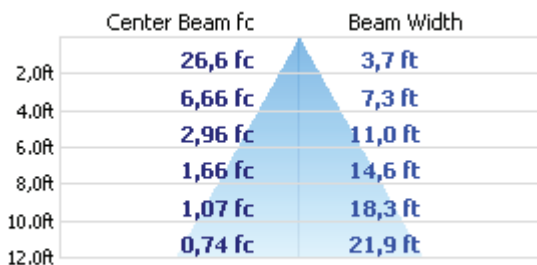
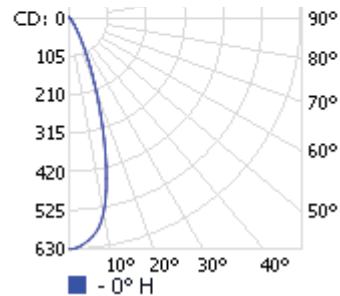
PHOTOMETRIC DATA

Visit iguzzini.com/us for complete photometric data.

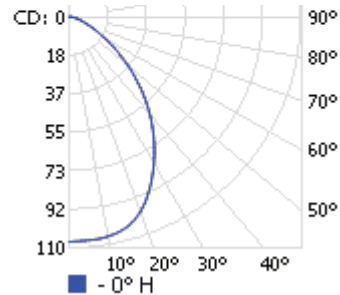
LOAD (W)	CCT (K)	CRI	OPTIC	LUMENS (lm)	EFFICACY (lm / w)	MAX CANDELA (cd)	MODELS
6.5W	4000K	80	FLOOD	245	37	675	I.BK31
	3000K			225	34	625	I.BK32
	4000K		WIDE FLOOD	215	33	115	I.BU38
	3000K			200	30	105	I.BU39



3000K - 80 CRI - 34° Flood



3000K - 80 CRI - 84° Wide flood



ORDERING INFO

MODEL	VOLTAGE	FINISH
<input type="radio"/> I.BK31 - 4000K, Flood <input type="radio"/> I.BK32 - 3000K, Flood <input type="radio"/> I.BU38 - 4000K, Wide flood <input type="radio"/> I.BU39 - 3000K, Wide flood	<input type="radio"/> UNV - 120-277V	<input type="radio"/> 01 - White <input type="radio"/> 15 - Gray

DUE TO CONTINUOUS IMPROVEMENTS, THE INFORMATION HEREIN MAY BE CHANGED WITHOUT NOTICE.

LAST UPDATE: JULY 17, 2018

JP - R3