



**Laser Blade InOut**  
Invisible Source

iGuzzini

High precision beam, superior yield and color consistency to enhance the liveability of outdoor environments. Wall, ceiling and recessed-mounted.

**Laser Blade InOut** Ceiling-Mounted / Wall-Mounted (IP65)



Ceiling-Mounted  
**New**



Wall-Mounted  
**New**

## Laser Blade InOut

Laser Blade InOut takes the invisible light revolution of Laser Blade High Contrast outdoors. Not just style consistency, but visual consistency too.



**Laser Blade InOut** Downlight (IP65)

---



Recessed Frame

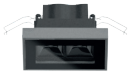


Recessed Flush

# Laser Blade InOut

## Downlight

Gray / Black



White / Black



Rust Brown / Black



Black / Black



Glossy Lead  
**New**



Glossy Copper  
**New**



Glossy Urban Bronze  
**New**



Glossy Sand  
**New**



4 W / 352 lm



32°

9.8 W / 825 lm



12° 48°

20 W / 1613 lm



12° 48°

29 W / 2438 lm



12° 48°

Color Temperature	Degree of Protection	Frame Color	Baffle Color	Dimensions	w	d	h
2700K CRI 95	IK06 IP65	UGR<19	<ul style="list-style-type: none"> <li>Black</li> <li>Glossy Lead</li> <li>Glossy Copper</li> <li>Glossy Urban Bronze</li> <li>Glossy Sand</li> </ul>		3 5/16"	1 15/16"	2 3/16"
3000K CRI 90					6 1/4"	1 15/16"	2 9/16"
3500K CRI 95					11 1/2"	1 15/16"	1 15/16"
4000K CRI 95					16 11/16"	1 15/16"	1 15/16"

## Installations



Recessed frame

Installing in plasterboard **false ceilings**



Laser Blade InOut



Recessed flush

Installing in plasterboard **false ceilings**

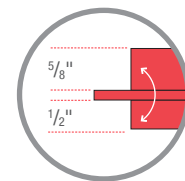


Adapter

+



Laser Blade InOut



## Ceiling-Mounted

Gray / Black



Rust Brown / Black



White / Black



Black / Black



5.7 W / 352 lm



32°

12.4 W / 825 lm



12° 48°

### Color Temperature

2700K CRI 95  
3000K CRI 90  
3500K CRI 95  
4000K CRI 95

### Degree of Protection

IK06  
IP65

### Body Color

Black  
Gray  
White  
Rust Brown

### Baffle Color

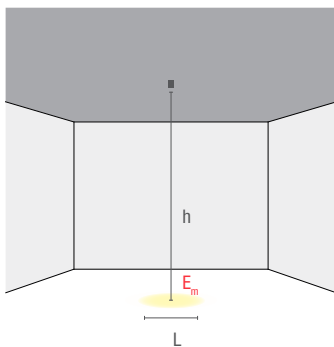
Black  
Glossy Lead  
Glossy Copper  
Glossy Urban Bronze  
Glossy Sand

### Dimensions

	w	w'	d	d'	h
	3 1/4"	4 1/2"	2"	4 1/2"	3 7/8"
	6 1/4"	6 1/4"	2"	4 1/2"	3 7/8"

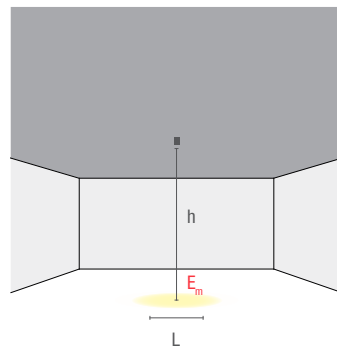
## Installation Examples

Laser Blade InOut: 12°



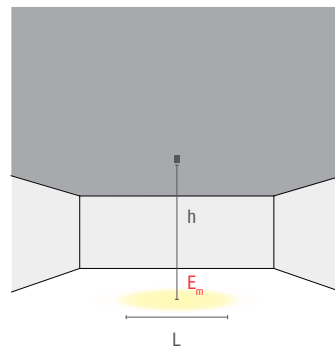
h = 26'  
 $E_m = 80 \text{ lux}$   
L = 5'6"

Laser Blade InOut: 30°



h = 16'  
 $E_m = 16 \text{ lux}$   
L = 8'

Laser Blade InOut: 48°



h = 13'  
 $E_m = 63 \text{ lux}$   
L = 12'

## Wall-Mounted

Gray / Black



Rust Brown / Black



White / Black



Black / Black



5.7 W / 217 lm



44°

12.4 W / 770 lm



45°

### Color Temperature

2700K	CRI 95
3000K	CRI 90
3500K	CRI 95
4000K	CRI 95

### Degree of Protection

IK06
IP65

### Body Color

UGR<19	Black
	Gray
	White
	Rust Brown

### Baffle Color

Black
Glossy Lead
Glossy Copper
Glossy Urban Bronze
Glossy Sand

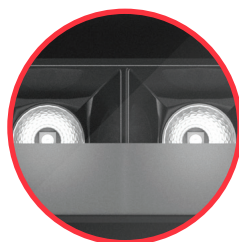
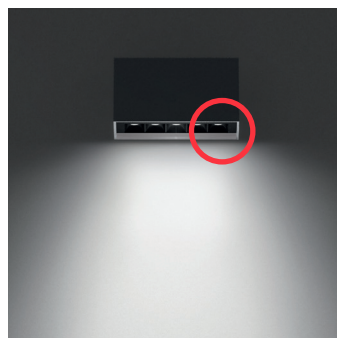
### Dimensions

Values refer to 3000K versions - CRI 90

	w	w'	d	d'	h
	3 1/4"	4 1/16"	2"	4 1/2"	4"
	6 1/4"	6 1/4"	2 1/2"	4 1/2"	4"

## Wall Light Uniformity

Laser Blade InOut



Other products on the market



Wall-mounted Laser Blade InOut luminaires are fitted with a special Silk Screen that ensures wall lighting is homogeneous and eliminates dark areas and patches. **Available with black baffle only.**

