

TYPHA REMOTE

SUPPORT BASE

Project name: _____

Type: _____



Exterior decorative luminaire.

Luminaire characteristics: Luminaire only

Power input: 1.5W

Lumens: 46lm (delivered)

Luminaire efficacy: 27lm/W

Source: White LED, 4000K: 80CRI (LM-80 tested).

Lumen maintenance: >80% of initial lumens at 60 000 hours (L80)

Optics: General lighting.

Mounting: To be installed in a 5/8" (23mm) hole or with the optional mounting base (see installation accessory).

Material:

Body: UV resistant polycarbonate tubular diffuser with internal PMMA optic

Base: stainless steel

Electrical: See remote power supply options.

Requirement for one (1) fixture: 1.7W, 500mA.

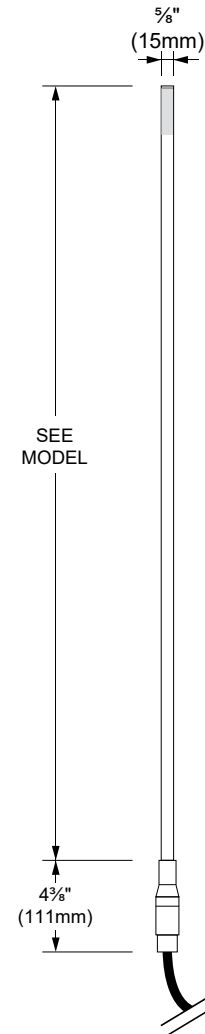
Finish: Stainless steel

Weight: TBC

Warranty: 5 years limited warranty.

Certification: cULus listed.

Ratings: IP67, IK07.



FRONT VIEW

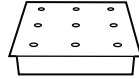
Project name: _____

Type: _____

BASE INSTALLATION
(BASE TO BE ORDERED SEPARATELY)

Typha can be installed individually or in a cluster configuration. The base can accommodate up to 9 Typha elements and is powered by a remote power supply (to be ordered separately). It can be fastened to hard surfaces such as stone, wood or simply buried into the ground.

- **I.T415-13** - Multiple support base
Max 9 fixtures
Dim: 19¼"x19¼"x5"
(500x500x126mm)



POWER SUPPLY OPTION
(TO BE ORDERED SEPARATELY)

Power supply boxes can be installed inside or outside the base. Check dimensions compatibility below.

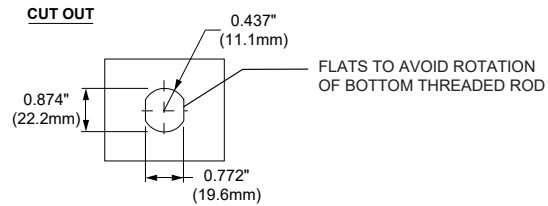
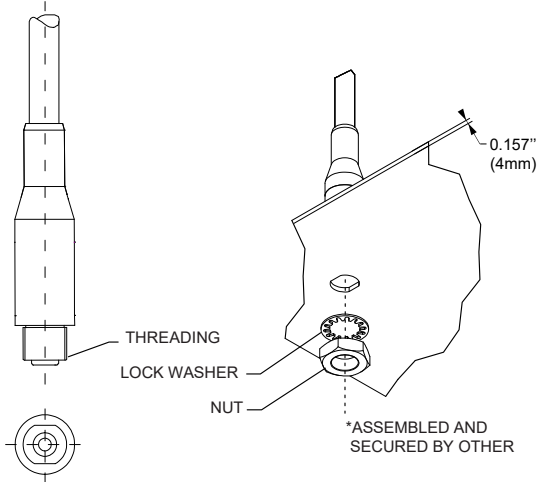
Watts	Min-Max	Voltage	Rating	Dimming protocol	Box dimensions	Compatible with base	Max distance 18AWG	Code
06	1-4	120-277V	Outdoor	None	7" X 4" X 3" (178 X 102 X 76mm)	Yes	20ft (6m)	4548-0500-006-UNV-ND
20	5-12	120-277V	Outdoor	None	7" X 4" X 3" (178 X 102 X 76mm)	Yes	20ft (6m)	4548-0500-020-UNV-ND
27	1-16	120-277V	Outdoor	0-10V	14" X 5" X 3" (356 X 127 X 76mm)	No	72ft (22m)	4549-0500-027-UNV-SD10
50	1-32	120-277V	Outdoor	0-10V	14" X 5" X 3" (356 X 127 X 76mm)	No	72ft (22m)	4549-0500-050-UNV-SD10
100	1-64	120-277V	Outdoor	0-10V	14" X 5" X 3" (356 X 127 X 76mm)	No	72ft (22m)	4549-0500-100-UNV-SD10

Project name: _____

Type: _____

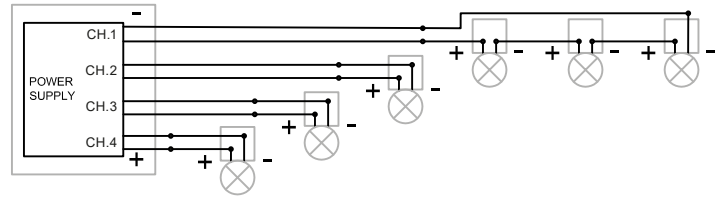
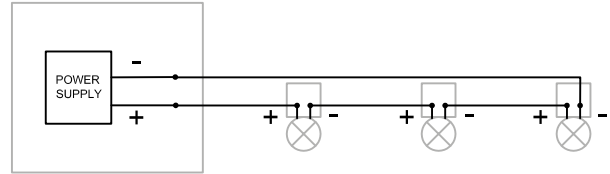
ALTERNATE INSTALLATION

Typha can also be mounted into any hard material up to 3/16" - (5mm) thick. All stainless steel hardware included.



WIRING DIAGRAMS

Multiple luminaires must be connected in series (home run or fixture chain)



ORDERING INFO

<p>MODEL FINISH</p> <p>MODEL</p> <ul style="list-style-type: none"> <input type="radio"/> I.ADT3 - 39³/₈" (1000mm) <input type="radio"/> I.ADT4 - 51¹/₄" (1300mm) <input type="radio"/> I.ADT5 - 59" (1500mm) 	<p>FINISH</p> <ul style="list-style-type: none"> <input type="radio"/> 13 - Stainless steel 	<p>REMOTE POWER SUPPLY OPTION (TO BE ORDERED SEPARATELY) Requirement for one (1) fixture: 1.7W, 500mA</p> <ul style="list-style-type: none"> <input type="radio"/> 4548-0500-006-UNV-ND <input type="radio"/> 4548-0500-020-UNV-ND <input type="radio"/> 4549-0500-027-UNV-SD10 <input type="radio"/> 4549-0500-050-UNV-SD10 <input type="radio"/> 4549-0500-100-UNV-SD10
<p>NOTES:</p> <div style="border: 1px solid black; height: 100px; width: 100%;"></div>		